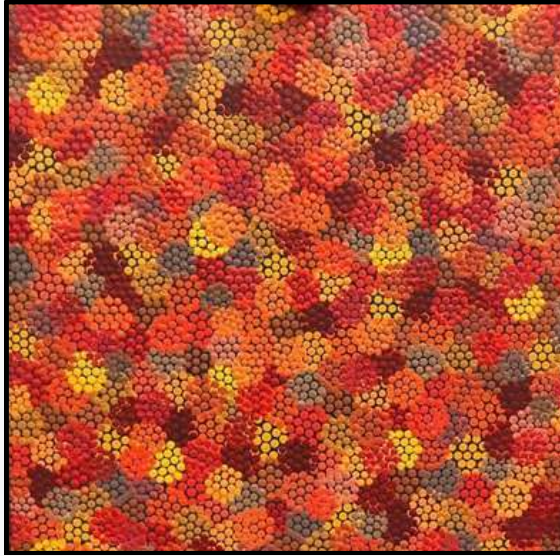


COLLECTION (SOLD)



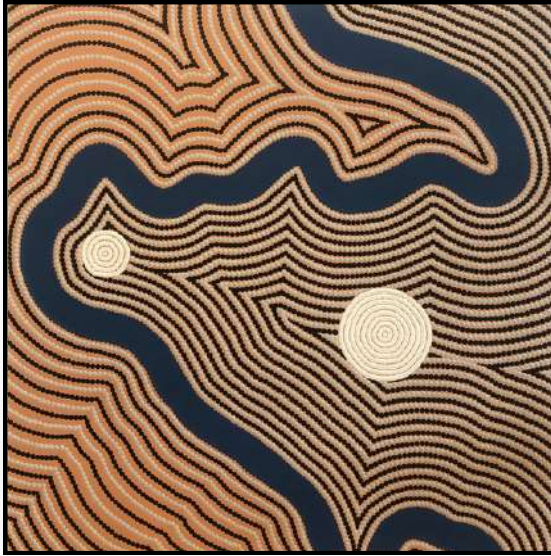


AUTUMN LEAVES

Size:
50cm x 50cm x 2cm

Medium:
Acrylic on stretched canvas

In the southern states of Australia, some trees lose their leaves in Autumn readying for the Winter months before regrowing them in Spring. This painting depicts the colours of the Autumn Leaves falling to the ground. What rises has to fall and the cycle continues.



BUGABOO POINT

Size:
60cm x 60cm x 4cm

Medium:
Acrylic on stretched canvas

This landscape painting depicts the lands where the artists Great Great Grandmother and Great Grandmother lived and worked as cooks on an Orchid farm during the late 1800's and early 1900's



BURNING SUN, ASH LAND

Size:
75cm x 60cm x 4cm

Medium:
Acrylic on stretched canvas

Inspired by bushfires that engulfed the east coast of New South Wales. Burning hectare after hectare, leaving a landscape of ash, smoke blanketed the skyline turning the sun to red. Drought stricken communities and a drought stricken landscape were devastated by fire.



CHERRYBROOK

Size:
152cm x 60cm x 4cm

Medium:
Acrylic on stretched canvas

Landscape painting of the lands (Darug country) where the artist lived. It shows the undulation of the land, national parklands, waterways and the community hubs.

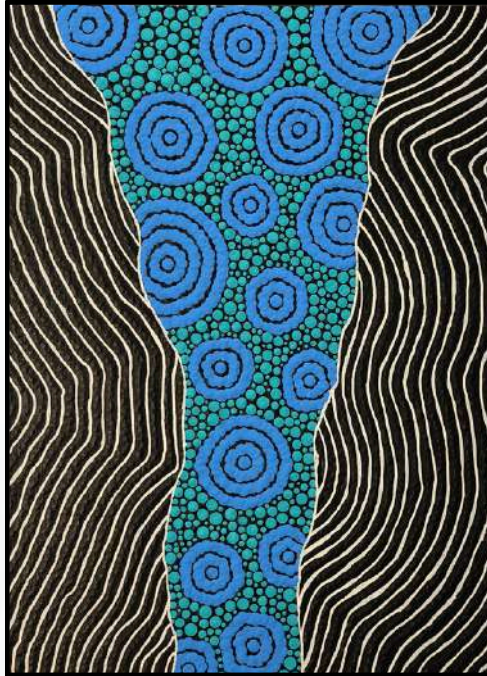


CORROBOREE (SET OF 3)

Size:
30cm x 30cm x 4cm

Medium:
Acrylic on stretched canvas

Corroboree means come together for ceremony and dance and Aboriginal peoples would paint themselves in yellow ochre at these ceremonies. The name was also given to an endangered frog in the southern highlands of NSW that is decorated in yellow. The painting itself is an abstract painting of the frog.



ESTUARY

Size:
40cm x 30cm x 6cm

Medium:
Acrylic on stretched canvas

Depicts the beautiful waterways and undulating river banks that provide life.



GALAHS AT THE WATERHOLE

Size:
40cm x 30cm x 4cm

Medium:
Acrylic on stretched canvas

Galahs are full of play, love to be in groups of friends and family that bring colour and life to our world and the waterholes that spot the dry Australian landscape.



GOANNA RIVER

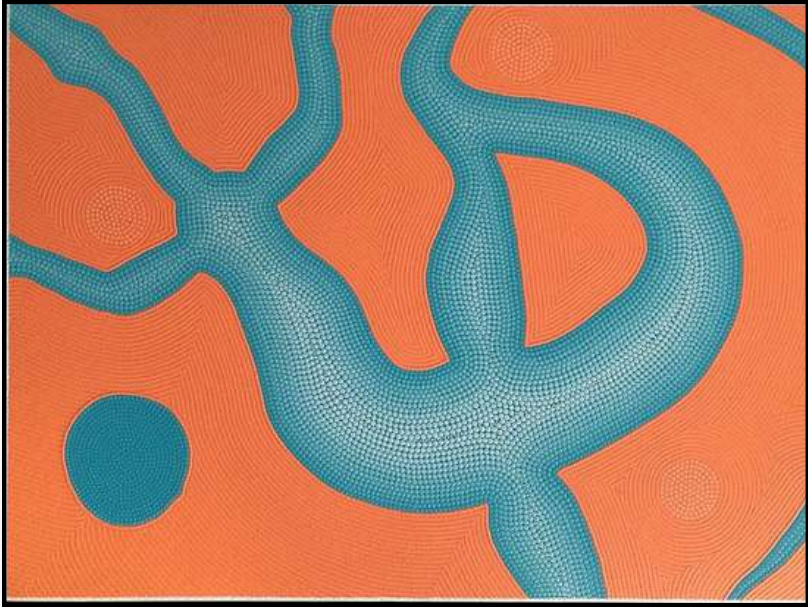
Size:

153cm x 61cm x 4cm

Medium:

Acrylic on stretched canvas

The artist's ancestors come from the Wiradjuri nation & Goanna is their Totem. In severe drought a secret water source was being used by male Goannas until a courageous young female Goanna followed the males towards the secret spot. She became exhausted and fell to sleep, when she awoke bush spirits surrounded her. They commended her bravery and helped her to the water source and showed her how to let it flow from the side of the mountain for everyone to share.



GOANNA RIVER 2

Size:
75cm x 100cm x 4cm

Medium:
Acrylic on stretched canvas

The artist's ancestors come from the Wiradjuri nation & Goanna is their Totem. In severe drought a secret water source was being used by male Goannas until a courageous young female Goanna followed the males towards the secret spot. She became exhausted and fell to sleep, when she awoke bush spirits surrounded her. They commended her bravery and helped her to the water source and showed her how to let it flow from the side of the mountain for everyone to share.



LIFE JOURNEY

Size:

40cm x 81cm x 4cm

Medium:

Acrylic on stretched canvas

To symbolise the path through life. The path has many undulations as it navigates its way, signifying the challenges we face and also the successes we have. The blood red circles represent the people we meet and the earthy brown circles the places we visit on our journey. Ultimately we reach our ancestors in the sky.



LIFE JOURNEY 2

Size:

40cm x 30cm x 6cm

Medium:

Acrylic on stretched canvas

To symbolise the path through life. The path has many undulations as it navigates its way, signifying the challenges we face and also the successes we have. The blood red circles represent the people we meet and the earthy brown circles the places we visit on our journey. Ultimately we reach our ancestors in the sky.



MANY NATIONS (SET OF 4)

Size:
30cm x 30cm x 4cm

Medium:
Acrylic on stretched canvas

There were approx 500 Aboriginal nations covering Australia before the time of colonisation; each having their own language, land and customs. This painting in vivid colours depicts the many nations and different customs they have.



MOB CONNECTING TO ANCESTORS

Size:
91cm x 60cm x 4cm

Medium:
Acrylic on stretched canvas

The painting represents mob (families/tribes) coming together at meeting places on land, connecting to ancestors to share songlines (stories/lore) under the stars.



PERSPECTIVE

Size:

52cm x 77cm x 4cm

Medium:

Acrylic on stretched canvas

Each of us sees the world through a different lens, and perspectives are ever-changing. This artwork captures a serene bird's-eye view of flowing rivers and lakes embraced by surrounding mountain ranges. Ahead, the expansive sky reveals soft rays of sunlight breaking gently through calm grey clouds, evoking a deep sense of peace and stillness. To the right, a towering mountain stands strong and steadfast — a quiet symbol of resilience and strength.



SUNRISE

Size:
40cm x 81cm x 4cm

Medium:
Acrylic on stretched canvas

Presented to Astronaut Pamela Melroy; this painting depicts the landscape with the earth showing the sea, rivers, lush land and the sunrise emanating warmth and providing life to the Earth.



THE HILLS ARE BURNING

Size:
75cm x 60cm x 4cm

Medium:
Acrylic on stretched canvas

Inspired by the bushfires that can engulf Australia - this painting depicts two sides of a river. One being destroyed by the fire and the other remains lush green. It highlights the indiscriminate nature of fire, and the destruction it causes burning one side of a street while the other remains untouched.



URUNGA

Size:
150cm x 60cm x 4cm

Medium:
Acrylic on stretched canvas

Landscape painting of where the artist grew up, a town called Urunga "where the rivers meet the sea".



WAMBUUL

Size:
91cm x 60cm x 4cm

Medium:
Acrylic on stretched canvas

Wambuul is the Wiradjuri (Aboriginal) name for what is now called the Macquarie River. This painting depicts the winding river traversing the landscape and passing by many meeting places along its banks.



WATER, EARTH & FIRE (SET OF 3)

Size:

38cm x 38cm x 4cm

Medium:

Acrylic on stretched canvas

As custodians of the country Aboriginal people cared for the land which enabled food sources to be more readily available and droughts and bushfires to have less of an effect on the population. The use of fire produced food sources for regrowth and or directed animals for hunting. The use of water through fishing practices, land irrigation and knowing where water sources were available in times of drought. We all come from the land and therefore cared for the land as the land provides for us all.



MEETING OF NATIONS

Size:
60cm x 45cm x 4cm

Medium:
Acrylic on stretched canvas

Vibrant nations all with different customs coming together to meet, talk and trade.



MEETING PLACE

Size:
30cm x 40cm x 4cm

Medium:
Acrylic on stretched canvas

Using more traditional techniques and ochre colours rendering a meeting place and land.



WIRADJURI

Size:
150cm x 120cm x 4cm

Medium:
Acrylic on stretched canvas

Finalist Fishers Ghost Art Awards 2016. This painting depicts the lands of the Wiradjuri nation and the importance of their Totem and water to the lands and peoples.