



TIM YULE
ABORIGINAL
ARTIST

THE ARTIST TIM YULE

"Expressing my Indigenous heritage through art is a humbling and gratifying experience. Every piece is unique, delivering its own story through colour and design."

TIM YULE.



WHERE HERITAGE MEETS HOME

Tim Yule is a contemporary Aboriginal artist based in Sydney whose practice draws deeply from his identity as a Wiradjuri descendant, his upbringing along coastal NSW and the enduring cultural knowledge of Aboriginal Australia. Yule explores themes of connection to Country, ancestry, storytelling and the continuing presence of Indigenous culture within modern Australian life.

Through layered textures, symbolic forms and rhythmic mark-making, Yule's artworks bridge traditional visual language with a contemporary aesthetic. His practice is grounded in respect for cultural heritage while embracing modern expression, creating works that speak to both memory and present-day experience. Each piece reflects a dialogue between past and present.

Influenced by landscapes and the urban environment, Yule's work often contrasts organic patterns with contemporary composition and abstraction. This intersection creates a narrative that invites audiences to reflect on connection, belonging and the importance of preserving cultural stories.

Through his art, Tim Yule seeks to create conversation, reflection and cultural understanding. His practice is both personal and collective — an expression of identity, history and the living strength of culture within contemporary Australia.

COLLECTION (IN-STOCK)





ANCIENT CONNECTIONS

Size:
100cm x 70cm x 3cm

Medium:
Acrylic on stretched canvas

This artwork explores the enduring connections between people, Country and spirit. The thousands of flowing marks represent the many stories, pathways and relationships that have been woven through time. Each mark reflects a journey, a memory and a connection passed through generations.



THE FLOW OF SPIRIT

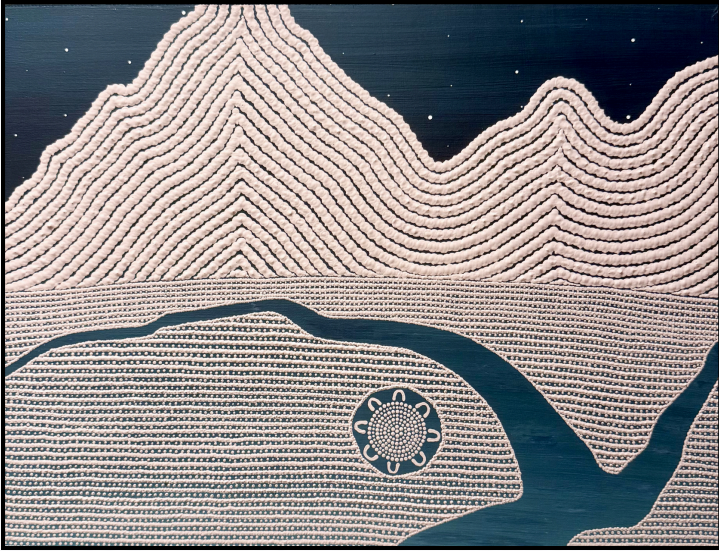
Size:

100cm x 70cm x 3cm

Medium:

Acrylic on stretched canvas

A story of connection between our ancestors, sky and the gathering places below. Stars representing spirit, ancestors and the timeless knowledge. The energy flows down to country through ceremony and stories, connecting people, place and culture. The artwork links the invisible threads that bind us to our ancestors and our country - we are never truly separate from either.



HOMELANDS

Size:
30cm x 40cm x 2cm

Medium:
Acrylic on timber panel

Reflects the lands of the artists childhood - a deeply personal connection to place, memory and identity.

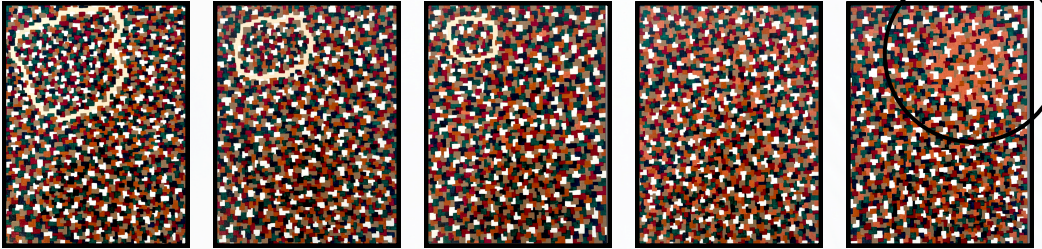


GALAHS AT SUNRISE

Size:
100cm x 70cm x 4cm

Medium:
Acrylic on stretched canvas

Galahs cut through the vivid blue skyline as golden rays of light radiate. Depicting the positive influence of family as they move through life together.



INNERWORK (SET OF 5)

Size:
30cm x 40cm x 2cm

Medium:
Acrylic on timber panel

This series of paintings captures the journey of self-discovery and growth. It begins with recognising the need for change and evolves through persistent self-reflection and challenge. As old beliefs are shed, new perspectives, energies and connections emerge.

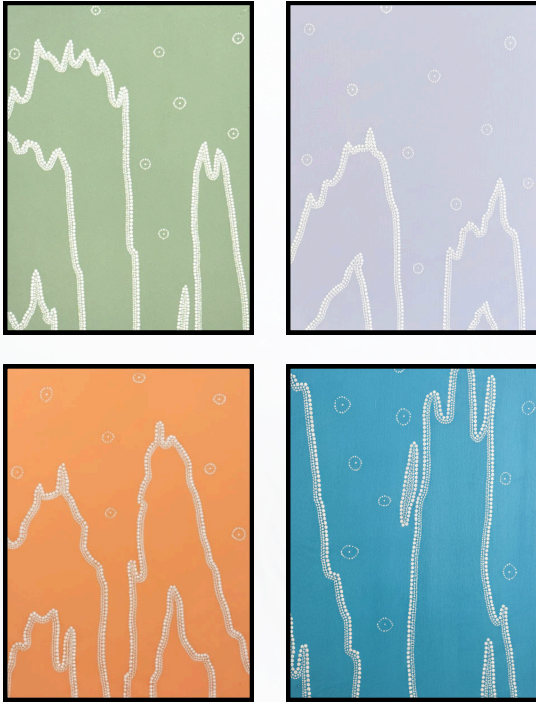


KOOKABURRA

Size:
30cm x 40cm x 2cm

Medium:
Acrylic on timber panel

Kookaburras are symbols of joy, laughter and family. Their dawn laughing song signals the welcoming of a new day and with it fresh beginnings. They are also seen as messengers and guardians that offer protection and help in healing old wounds through the power of laughter.



TIDES 1-4

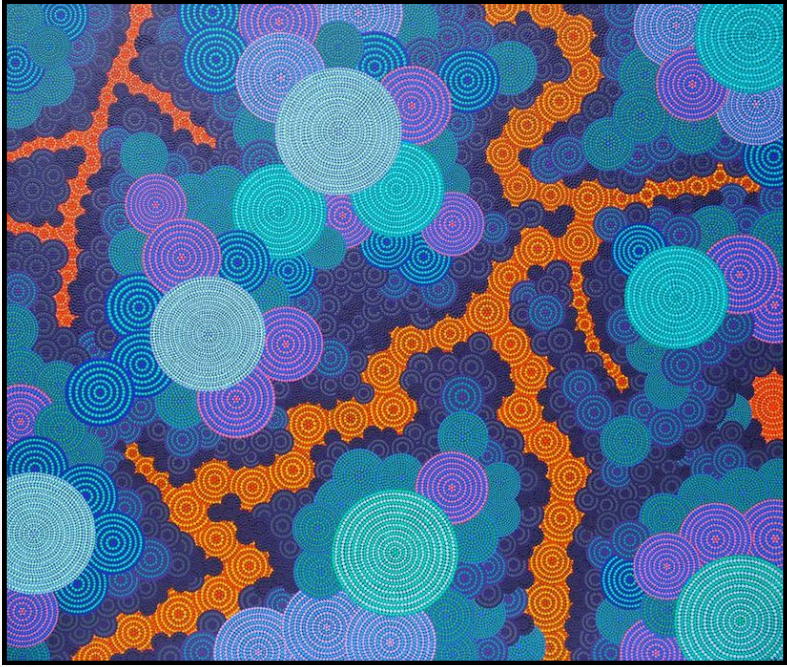
Size:
30cm x 40cm x 2cm

Medium:
Acrylic on timber panel

Showcases the serene connection between ocean and shore. The intricate details and patterns evoke the soothing rhythms of the coast. Pippie holes signal the life the shoreline is home to.

COLLECTION (COMMISSIONED)





BEROWRA VALLEY

Size:
168cm x 198cm x 4cm

Medium:
Acrylic on stretched canvas

Commissioned landscape painting of the lands where the owners of the painting live, the Berowra Valley, sprawling Dharug & Guringai lands. It depicts the high ridges, deep valleys and waterways that cut through the land.



CONCORD/WANGAL (MURAL)

Size:
360cm x 150cm (2 Panels)

Medium:
Acrylic on timber

Commissioned by Concord Public School to paint a mural representing the Aboriginal connection to the area and the primary school students. The painting reflects the varied tribes the students come from and personalised with each student's handprints. The river running through the middle is the Parramatta river which holds a significant place in Aboriginal life. The stars in the sky represent ancestors and stories that are told from the star constellations.



FAMILY JOURNEY

Size:

100cm x 75cm x 4cm

Medium:

Acrylic on stretched canvas

Commissioned piece showing a map of Australia with the Aboriginal Flag draping the land. Two Goannas, the totem of the family being painted, traverse the landscape. Each circle represents the places the family has been and going to. Handprints reflect the DNA - the thousands of years of connection to this country.



MANY NATIONS 2 (SET OF 3)

Size:
60cm x 50cm x 4cm

Medium:
Acrylic on stretched canvas

There were approx 500 Aboriginal nations covering Australia before the time of colonisation; each having their own language, land and customs. This painting in vivid colour depicts the many nations and different customs they have. The black and white circles above the nations depict the stars and our ancestors in the sky, the dreaming.



WARRIOR RISE UP

Size:

100cm x 100cm x 4cm

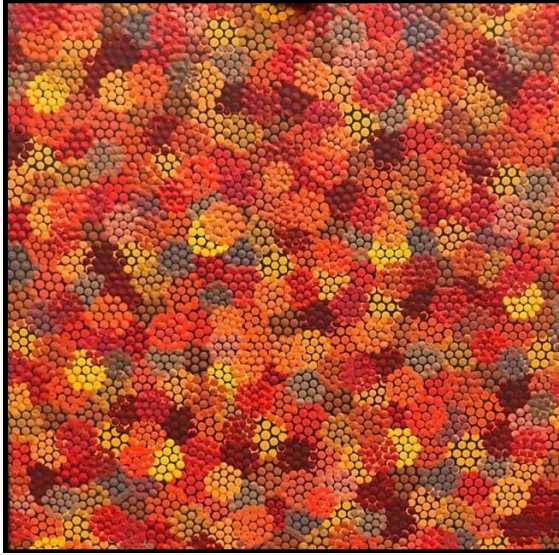
Medium:

Acrylic on stretched canvas

Commissioned by NSW Northern Rivers Correctional Services. Landscape of the Northern Rivers (Tweed Heads) area with prominent Wollumbin (Mt Warning) overlooking the landscape. Wollumbin means Warrior in the Bundjalung language. This painting asks the viewer to recognise where they come from, the history of the land and become the Warrior within, to rise up from the challenges they are facing and move forward.

COLLECTION (SOLD)





AUTUMN LEAVES

Size:
50cm x 50cm x 2cm

Medium:
Acrylic on stretched canvas

In the southern states of Australia, some trees lose their leaves in Autumn readying for the Winter months before regrowing them in Spring. This painting depicts the colours of the Autumn Leaves falling to the ground. What rises has to fall and the cycle continues.



BUGABOO POINT

Size:
60cm x 60cm x 4cm

Medium:
Acrylic on stretched canvas

This landscape painting depicts the lands where the artists Great Great Grandmother and Great Grandmother lived and worked as cooks on an Orchid farm during the late 1800's and early 1900's



BURNING SUN, ASH LAND

Size:

75cm x 60cm x 4cm

Medium:

Acrylic on stretched canvas

Inspired by bushfires that engulfed the east coast of New South Wales. Burning hectare after hectare, leaving a landscape of ash, smoke blanketed the skyline turning the sun to red. Drought stricken communities and a drought stricken landscape were devastated by fire.



CHERRYBROOK

Size:
152cm x 60cm x 4cm

Medium:
Acrylic on stretched canvas

Landscape painting of the lands (Darug country) where the artist lived. It shows the undulation of the land, national parklands, waterways and the community hubs.



GALAHS AT THE WATERHOLE

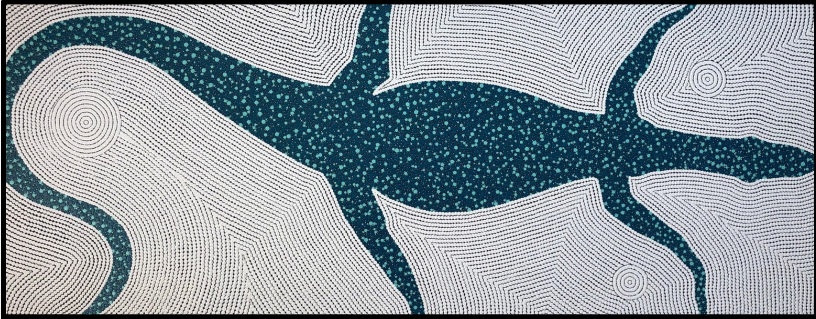
Size:

40cm x 30cm x 4cm

Medium:

Acrylic on stretched canvas

Galahs are full of play, love to be in groups of friends and family that bring colour and life to our world and the waterholes that spot the dry Australian landscape.



GOANNA RIVER

Size:

153cm x 61cm x 4cm

Medium:

Acrylic on stretched canvas

The artist's ancestors come from the Wiradjuri nation & Goanna is their Totem. In severe drought a secret water source was being used by male Goannas until a courageous young female Goanna followed the males towards the secret spot. She became exhausted and fell to sleep, when she awoke bush spirits surrounded her. They commended her bravery and helped her to the water source and showed her how to let it flow from the side of the mountain for everyone to share.



LIFE JOURNEY

Size:

40cm x 81cm x 4cm

Medium:

Acrylic on stretched canvas

To symbolise the path through life. The path has many undulations as it navigates its way, signifying the challenges we face and also the successes we have. The blood red circles represent the people we meet and the earthy brown circles the places we visit on our journey. Ultimately we reach our ancestors in the sky.

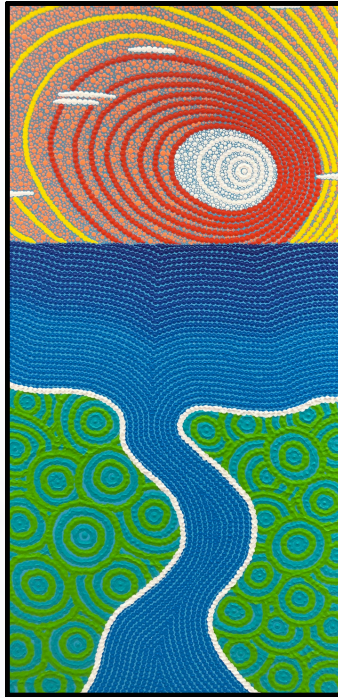


MOB CONNECTING TO ANCESTORS

Size:
91cm x 60cm x 4cm

Medium:
Acrylic on stretched canvas

The painting represents mob (families/tribes) coming together at meeting places on land, connecting to ancestors to share songlines (stories/lore) under the stars.



SUNRISE

Size:
40cm x 81cm x 4cm

Medium:
Acrylic on stretched canvas

Presented to Astronaut Pamela Melroy; this painting depicts the landscape with the earth showing the sea, rivers, lush land and the sunrise emanating warmth and providing life to the Earth.



THE HILLS ARE BURNING

Size:
75cm x 60cm x 4cm

Medium:
Acrylic on stretched canvas

Inspired by the bushfires that can engulf Australia - this painting depicts two sides of a river. One being destroyed by the fire and the other remains lush green. It highlights the indiscriminate nature of fire, and the destruction it causes burning one side of a street while the other remains untouched.

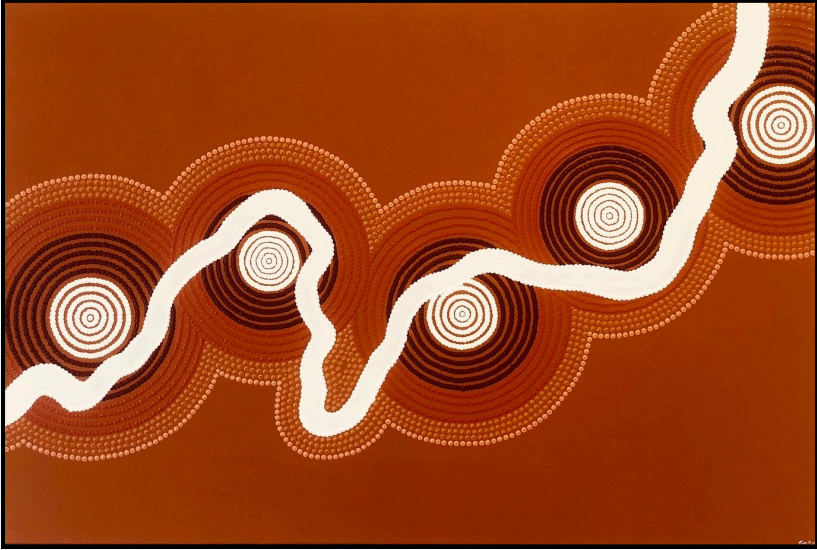


URUNGA

Size:
150cm x 60cm x 4cm

Medium:
Acrylic on stretched canvas

Landscape painting of where the artist grew up, a town called Urunga "where the rivers meet the sea".



WAMBUUL

Size:
91cm x 60cm x 4cm

Medium:
Acrylic on stretched canvas

Wambuul is the Wiradjuri (Aboriginal) name for what is now called the Macquarie River. This painting depicts the winding river traversing the landscape and passing by many meeting places along its banks.



WATER, EARTH & FIRE (SET OF 3)

Size:

38cm x 38cm x 4cm

Medium:

Acrylic on stretched canvas

As custodians of the country Aboriginal people cared for the land which enabled food sources to be more readily available and droughts and bushfires to have less of an effect on the population. The use of fire produced food sources for regrowth and or directed animals for hunting. The use of water through fishing practices, land irrigation and knowing where water sources were available in times of drought. We all come from the land and therefore cared for the land as the land provides for us all.



WIRADJURI

Size:
150cm x 120cm x 4cm

Medium:
Acrylic on stretched canvas

Finalist Fishers Ghost Art Awards 2016. This painting depicts the lands of the Wiradjuri nation and the importance of their Totem and water to the lands and peoples.